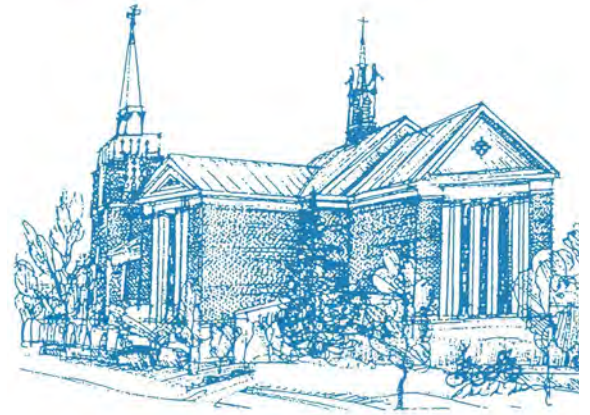


**SS. FAITH, HOPE & CHARITY
CATHOLIC PARISH**

Annual Financial Report

July 1, 2022 - June 30, 2023





December 2023

Dear Parishioner,

Enclosed is a copy of our 2022-23 Annual Report. It is a positive report with a surplus, albeit a very modest one of just under \$41,000. As I reflected at all the Masses on the weekend before Thanksgiving, we have some challenges ahead. In the past 1 ½ years a few of our very generous parishioners have gone on to their eternal reward. Collectively their generosity to the parish was around \$200,000 per year. That deficit will be felt in the current fiscal year and in future years. My hope is that we can generate normal operating revenue via collections that offsets that loss. We are also working on finalizing the plans for a new air conditioning system for our church. The cost has not been finalized, but it will be north of \$875,000. I will give you more information as soon as I get it.

Financials are an important part of any report, but they only tell a part of the story. Our sacramental numbers, especially Baptisms, remain strong. Our Rite of Christian Initiation (RCIA) group is the largest that it has been in over a decade. People are interested in learning about and hopefully joining the Church. This year's Giving Tree once again appears to be a great sign of our parish's generosity to those in need at Christmas. A dedicated group of people are working on an outreach to refugee families that have come to Chicago. Much is happening here at FHC and with your help we will continue to grow.

Fr. Marty O'Donovan

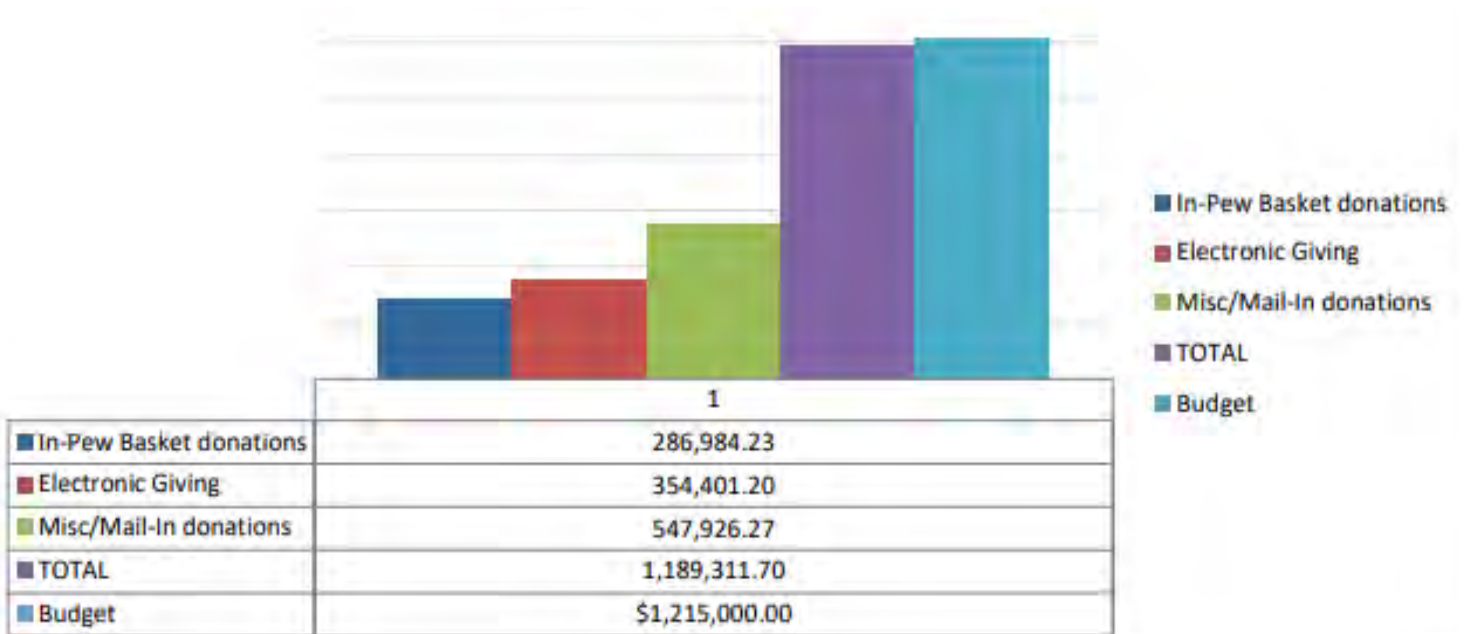
Fr. Marty O'Donovan

Goodbye Fr. Thomas...



...Hello Fr. Mario!

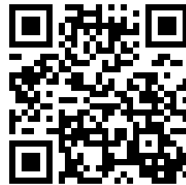
**Ss. Faith, Hope & Charity Parish
Sunday Offertory vs. Budget
FY 2022/2023**



Consider Electronic Giving!

Regular electronic giving enables you to consistently and easily support Ss. Faith, Hope and Charity Parish. Electronic giving also helps the parish predict cash-flow for budgeting purposes. Visit www.givecentral.org to sign up or contact the business office by email at dborman@faithhope.org.

To donate electronically:



A Tax-Savvy Way to Support Faith Hope!

When you donate appreciated securities or mutual funds to our parish, you can reduce or even eliminate federal capital gains taxes on the transfer. You may also be entitled to a federal income tax charitable deduction based on the fair market value of the securities at the time of the transfer. For more information about donating stock or securities, please contact your financial advisor.

To make a stock donation to our parish please visit archchicago.org/stockgiftform and complete the electronic Letter of Intention (LOI) form. Once you have submitted the form, you will receive a confirmation email with detailed instructions for you to complete your gift. If you have any questions, please contact Karen Whitehead, Archdiocese of Chicago at 312.534.7461 or kwhitehead@archchicago.org. All gifts directly benefit Ss Faith Hope & Charity. If you have any additional questions please reach out to our Business Office at dborman@faithhope.org

Ss. Faith, Hope & Charity Parish Statement of Financial Position June 30, 2023 and 2022

	2023	2022
Assets		
Cash in Banks and Money Market Funds	\$ 796,740	1,258,575
Regular Operating Savings / TTWCI	2,708,165	2,643,940
Stipend Account	18,513	18,439
Total Cash and Equivalents	3,523,418	3,920,954
Property	23,424	23,424
Tuition Received in Process	118,223	0
Total Assets	\$ 3,665,065	3,944,378
	2023	2022
Liabilities and Net Assets		
Payables	\$ 349,826	222,136
Prepaid School Tuition and Fees	31,735	266,500
Total Liabilities	381,561	488,636
Net Assets		
Unrestricted Funds	3,022,455	2,948,859
Property Fund	23,424	23,424
	3,045,879	2,972,283
Restricted Funds:		
Anchors With Heart Fund	185,637	268,394
Paddle Raise STEM	11,008	62,250
	196,645	330,644
Net Parish	40,980	152,815
Total Liabilities and Net Assets	\$ 3,665,065	3,944,378



Ss. Faith, Hope & Charity Parish
Statement of Activities
Fiscal Year End June 30

	2023			2022
	CHURCH & RE	SCHOOL	TOTAL	TOTAL
REVENUE:				
Sundays and Holy Day Collections	\$ 1,189,312	-	1,189,312	1,137,532
Christmas Collection	370,538	-	370,538	384,655
Easter Collection	138,320	-	138,320	135,914
Thanksgiving Collection	281,588	-	281,588	275,611
Tuition & Fees	125,178	2,471,951	2,597,129	2,034,642
Miscellaneous Income	40,510	1,330	41,840	35,926
Outside Funding Sources	-	47,564	47,564	71,912
Fundraising	-	310,000	310,000	200,000
Total Revenue	\$ 2,145,446	2,830,845	4,976,291	4,276,192
EXPENSES:				
Salaries & Benefits	\$ 940,388	2,488,703	3,429,091	2,974,946
Books and Supplies (Non Liturgical)	23,783	200,404	224,187	198,172
Furnishings, Supplies & Equipment	64,506	51,729	116,235	132,219
Food Service & Meals	32,349	2,890	32,249	29,520
Utilities	167,512	120,042	287,554	183,633
Maintenance & Building Repairs	122,543	176,359	298,902	288,415
Archdiocesan Assessment	194,328	-	194,328	193,068
PRMAA Assessment	68,016	-	68,016	67,574
OCS Assessment	-	14,000	14,000	12,126
Property / Casualty	91,073	68,704	159,777	164,852
Auto Insurance - Priest Owned Vehicles	2,986	-	2,986	2,690
Miscellaneous	49,467	36,229	85,696	68,275
Total Expenses	\$ 1,753,961	3,159,060	4,913,021	4,315,490
Ordinary Operating Surplus (Deficit)	391,485	(328,215)	63,270	(39,298)
EXTRAORDINARY INCOME:				
Sharing Collections	\$ 90,185	-	90,185	107,599
Arch Required Collections	58,953	-	58,953	30,456
Estates, Bequests and Memorials	258,627	-	258,627	312,532
Total Extraordinary Income	407,765	-	407,765	450,587
EXTRAORDINARY EXPENSES:				
Sharing / Outreach Donations	\$ 123,196	-	123,196	127,599
Payment Arch Required Collections	58,953	-	58,953	30,456
Other Capital Improvements	232,752	15,154	247,906	100,419
Total Extraordinary Expenses	\$ 414,901	15,154	430,055	258,474
Net Extraordinary Activities	(7,136)	(15,154)	(22,290)	192,113
Net Parish	\$ 384,349	(343,369)	40,980	152,815

Ss. Faith, Hope & Charity Parish
Growing in Faith - Building for Tomorrow

To Teach Who Christ Is Capital Campaign

Pledge Commitment Total (409 Donors)	\$9,711,100
Pledges Paid	8,425,073
Archdiocese Dollars Paid (40% due of benchmark goal)	803,352
Cancelled Pledges	\$200,156
No Payments on Pledges	\$62,250
Past Due Pledge Payments	\$480,698
Balance Due on Pledges	\$548,837

To Teach Who Christ Is Outreach Donations

Catholic Extension Yakima & Kalamazoo Projects (FY21/22)	\$120,000
St. Jerome Parish (FY22/23)	\$20,000
Archdiocese of Bhopal, India (FY22/23)	\$23,000

Parish Outreach (FY22/23)

Project Turkey	\$8,579
Giving Tree	\$15,370
Mission Chicago	\$7,505
Food Sharing	\$48,742

Annual Catholic Appeal* **\$191,508**

**The above amount is reflective of the total collected as of this report - but donations to ACA continue through December for the 2022 campaign. Our final ACA total for 2022 was \$254,301 against a goal of \$283,790.*



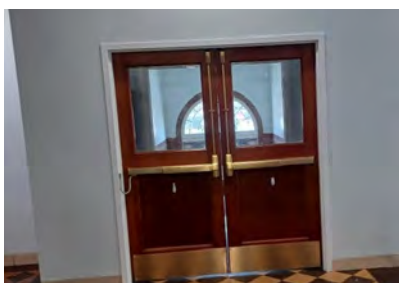
Ss. Faith, Hope & Charity Parish Anchors With Heart / Bulldog Fund

	2023	2022	2021
Fund Balance - Beginning of Year	\$ 330,644	461,419	248,581
Library Technology Center (restricted)	-	-	10,000
Technology and Classroom Setup (restricted)	-	-	66,550
STEM Lab Paddle Raise	-	62,250	
Contributions include Blarney Bash	560,722	599,073	548,455
Available Funds	\$ 891,366	1,122,742	873,586
Expenditures			
Blarney Bash Funded Capital Projects	89,920	328,591	8,716
*Blarney Bash Funded Faculty Bonuses	311,309	191,595	176,236
Total School Expenditures / Projects	\$ 401,229	520,186	184,952
School Financial Support			
Operating Expenses	\$ 250,000	200,000	165,000
Tuition Financial Assistance	43,492	71,912	62,215
	\$ 293,492	271,912	227,215
Total Expenditures	694,721	792,098	412,167
Fund Balance - End of Year	\$ 196,645 **	330,644	461,419

*New Archdiocesan Payroll System now has all taxes withheld (prior years only FICA/MHI withheld) which results in a significant variance from prior years on grossed-up bonus checks
 **BB23 raised additional monies (\$104,841) which were received by FHC in FY24

2023 BLARNEY BASH PADDLE RAISE

As always, the safety and security of our school and campus remains our first and highest priority. As a result of the highly successful paddle raise from the March 2023 Blarney Bash - which raised just under \$100,000 and an additional restricted gift for school security - we have been able to implement several important, new measures to improve school safety.



A brief summary of the steps taken this year:

- Comprehensive Safety Assessment conducted, with the assistance of the Winnetka Police Department, to inform our overall plan
- Recruited Beacon Training Group to conduct Active Threat Training for teachers
- Purchased and installed new 2-way radios for each classroom; with guidelines established for the radios to be carried at all times when outside the classroom
- 3M protective film installed on classroom windows and doors
- Raptor visitor management system introduced as new requirement for school entry
- Security door installed at the main entrance to the school
- Emergency Medical Kits distributed to all classrooms

The School Safety Committee will continue to meet throughout the year and the School will continue to prioritize and implement additional measures as budget allows.



Ss. Faith, Hope & Charity Parish Participation in Parish Life The Last Five Years

Parish Growth and Support

	2023	2022	2021	2020	2019
Families	1,693	1,668	1,711	1,698	1,672
Members	5,241	5,168	5,291	5,418	5,207
Sunday Mass attendance*	1,013	1,003	1,096	1,230	1,384
% of members attending	19%	19%	21%	23%	27%

Sacramental Life

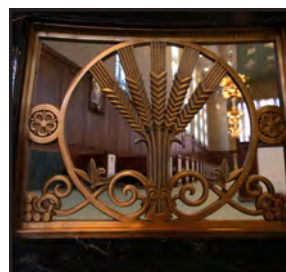
	2023	2022	2021	2020	2019
Baptisms	82	87	64	61	60
First Communions	80	78	88	83	91
Confirmations	85	69	81	101	80
Marriages					
Catholic	13	12	13	12	12
Interfaith	3	4	2	4	8
Funerals	38	53	35	32	46
RCIA candidate conversions	4	3	4	2	2

Education Programs

	2023	2022	2021	2020	2019
<u>Religious Education</u>					
Students	343	367	338	407	415
Annual tuition per student	\$ 360	360	360	360	360
<u>Elementary School</u>					
Pre-school	72	53	39	51	69
Kindergarten	13	24	18	34	40
Grades 1 through 8	200	190	211	210	217
	285	267	268	295	326

Per Student:

• Tuition	\$ 9,270	8,686	8,274	7,883	7,410
• Cost	\$ 11,084	9,855	10,037	10,584	9,312
% Tuition of Cost	84%	88%	82%	73%	80%



Ss. Faith, Hope & Charity Parish
Buildings & Grounds: Improvements and Special Projects
Fiscal Years Ended June 30

	2023	2022	2021	2020
Church / Bell Tower Drainage / Parish Center				
Roof and Downspout repairs	-	-	2,603	-
Parish Center Equipment, Supplies	3,995	-	-	2,625
HVAC Maintenance, Repairs	-	-	9,547	12,277
Parish Center Lobby Ceiling	-	6,288	-	-
Concrete, Doors and Sewer Repair	-	-	6,775.	10,540
Phone System Upgrade / IT Improvements	-	-	-	999
Fire Alarm, Sprinkler System	-	-	3,201	-
Electrical & Lighting Improvements	-	-	-	7,982
Landscaping, Masonry, Bell Tower Restoration	-	-	209,685	415,053
Cry Room Roof Repair	-	20,820	-	-
Asbestos / Mold Abatement	31,000	-	6,444	-
Parish Center Lobby Furnace	-	3,590	-	-
Compressor and Air Headler Repairs	9,178	18,300	-	-
Pneumatic Control Repairs	-	4,053	-	-
	\$ 44,173	53,051	238,255	449,476
TTWCI / Growing In Faith Capital Projects	\$ -	-	19,005	20,000
School				
Gym Steps Replaced	-	12,960	-	-
New School Administrative Position FY22	-	-	55,000	-
New Lockers	14,575	-	-	-
Carpet / Floor Covering	-	-	-	4,890
Boiler Repairs / HVAC System	-	18,691	-	30,806
Main Floor hallways painted	-	-	58,000	-
Gym Windows Repaired, Caulked, and Painted	-	-	4,350	-
Drainage / Plumbing	-	3,602	-	7,001
Fire / Sprinkler Electrical System repairs	-	-	18,064	9,340
Electrical System Upgrades	2,772	6,013	272,000	7,336
Kindergarten	-	-	-	8,401
Sewers, Drains, Flood Relief	-	4,350	15,885	10,444
Tuck Pointing	145,000	-	-	22,230
AEDs	-	-	-	3,062
Desks / Classroom Tables / Equipment	-	-	-	11,569
Boys Washrooms Middle School & Auditorium	12,550	35,000	-	-
New Radios	17,506	-	-	-
	\$ 192,403	80,616	423,299	115,079
Parish Activity Center (PAC)				
Tree Removal	-	7,000	-	-
Boiler Maintenance	-	2,212	22,500	-
Art Room Expansion	3,800	18,000	-	-
Preschool Sink & Flooring	7,530	16,000	-	-
Fire Safety System	-	-	-	1,830
	\$ 11,330	43,212	22,500	1,830
Rectory				
Plumbing / Bathroom Repair/Waterproofing	-	-	-	7,195
Boiler, Tubes, Handholds & AquaStat	-	3,500	9,250	-
	\$ -	3,500	9,250	7,195
Total	\$ 247,906	180,379	712,309	593,580

**Ss. Faith, Hope & Charity Parish
Participation in Parish Life
Contributions from Members
Fiscal Year End June 30**

Annual Contribution	2023				2022			
	Donors				Donors			
	No.	%	Amount (\$000)	%	No.	%	Amount (\$000)	%
<i>Full Members (1)</i>								
Over \$10,000	24	1%	\$793	42%	29	2%	\$915	47%
\$5,000-\$9,999	31	2%	236	13%	38	2%	256	13%
\$2,500-\$4,999	90	5%	239	13%	99	6%	247	13%
\$1,000-\$2,499	229	14%	353	19%	209	13%	285	15%
\$500-\$999	192	11%	177	9%	188	11%	146	8%
\$250-\$499	266	16%	123	7%	139	8%	47	2%
Less than \$250	268	16%	42	2%	286	17%	24	1%
No Record of Giving	593	35%	0	0%	680	41%	0	0%
Total	1,693	100%	1,963	99%	1,668	100%	1,920	99%
Cash Basket Donation			17	1%			14	1%
Total Contributors	1,693	100%	1,980	100%	1,668	100%	1,934	100%

NOTE: Included above are contributions from 'Student Families'.

Contributions from Student Families*

	2023				2022			
	Donors (\$000)				Donors (\$000)			
	No.	%	Amount	Avg/WK	No.	%	Amount	Avg/WK
SCHOOL								
Donors	59	36%	50	16	61	43%	51	16
No Record of Giving	105	64%	0		80	57%	0	
	164	100%	50		141	100%	51	
RELIGIOUS EDUCATION								
Donors	121	53%	81	13	109	48%	72	13
No Record of Giving	106	47%	0		118	52%	0	
	227	100%	81		227	100%	72	
Total Student Families	391		131	6	368		123	6

*These contributions are included in the main summary at the top of page.

OUTREACH

A Parish Partnership with the Diocese of Yakima, Washington State

The Literacy Wagon is part of a broad effort by the Diocese of Yakima, to reach out to Catholic migrant workers where they live, and to bring the Church to them. It was made possible by a multi-year pledge through Catholic Extension's Parish Partnerships program. In 2017, Saints Faith, Hope and Charity Parish in Winnetka, Illinois, made a 5-year commitment to financially support the ministry. Fr. Marty O'Donovan, pastor of Saints Faith, Hope and Charity, visited the migrant ministry to experience first-hand the fruits of his parish's generosity. He was reminded that "the Church isn't just in buildings; it's wherever people gather."

The relationships between Catholic Extension and the ministries that need support is what makes the difference between "helping" and "serving." Melissa Howlett, director of religious education at Ss. Faith, Hope and Charity, said it's the difference between "coming out, meeting people, being with people ... as opposed to coming with our own agenda."

"Catholic Extension does such a good job of seeing who's already there, working very hard, and investing in those people." Howlett joined O'Donovan for a visit to Yakima, where she spent a day playing and reading with the children her parish supports.



"The sobering part is to realize how transformative the Church is and to figure out how to help the Church to continue to provide basic needs and offer love, so these migrants know that we are all part of the Church of God," O'Donovan said.



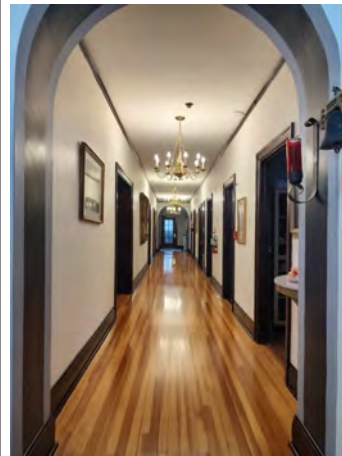
"Church is in this pavilion here on these campgrounds where we gather around the Eucharist," O'Donovan said. "Church is leading kids in simple games or feeding them lunch. ...That's Church."



A Parish Partnership with St. Jerome Parish in Rogers Park

In 2022, St. Jerome Parish in Rogers Park, with the assistance of a \$20,000 gift from FHC, and the donation of skilled time and talents of their parishioners in various trades, renovated a run down former convent and turned it into an exceptional and functional space for the St. Jerome Parish Latino School of Culture, Language and Religion.

This program was designed by pastor Fr. Noel Reyes to enhance the cultural assimilation of the second generation Latino population of their parish by teaching students the historical and religious roots of their ethnicity.



OUTREACH



A Parish Partnership with the Diocese of Kalamazoo, MI

Saints Faith, Hope and Charity partnered with Catholic Extension to support the inspiring work of Holy Family Healthcare. This project expanded the healthcare's site to triple its size and can now support 15,000 visits annually. They plan to renovate the vacant upper floors of the facility into dorm rooms, complete with a chapel, in the hope that medical students can do monthlong rotations to be immersed in rural healthcare and Catholic social teaching.

Holy Family Healthcare also offers nonmedical assistance, such as a food pantry, a free clothing closet and even scholarships for children to attend local Catholic schools.

Bill Kanzer, previous parish council president, who was among the visiting contingent, summed it up well. "These people help you realize the need is right here in our backyard."

See below the before and after of the healthcare facility and the new dental room.



A Parish Partnership with the Archdiocese of Bhopal

In 2015, Ss. Faith, Hope & Charity parishioners raised more than \$8 million in the "To Teach Who Christ Is" capital campaign. The money was spent on school improvements, a new parish center and charitable giving. This year, FHC gave some money to meet a great need at a parish school across the globe. That need came to us from a close FHC friend who served us well then had to say goodbye. After 5 years with FHC, Father Thomas Philip is back home in India with a gift from all of YOU.

The Archdiocese of Bhopal is in the center of India. The students pay less than a quarter per month to attend school there. With the upcoming rainy season ahead, Fr. Thomas noticed an immediate need. \$23,000 from Ss. Faith, Hope & Charity church paid for a new tin roof to help these growing minds and bodies. "It is a roof to cover children who are trying to go to school and learn. This is the epitome of helping the poor," said Fr. O'Donovan. "They can stand tall. That is something very important," noted Fr. Thomas.



PARISH MINISTRIES



**WOMEN'S GUILD
ADVENT
CANDLELIGHT**



MEN'S LENTEN BREAKFAST



PARISH MINISTRIES



WIT & WISDOM



'Tis the season for all of the Witty and Wise (65+) to come to an Old Fashioned Christmas Party!

December 14th in the Parish Center

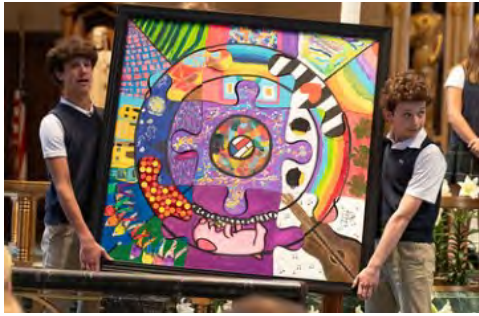
Contact Arlene Jerva at 847-446-0191 with questions

Plan to Join us for An Old Fashioned Christmas Party beginning at 5pm in the Parish Center followed by Vespers at 7pm in Church

\$40 per person
Carving Station, hors d'oeuvres, desserts and more!

**WIT & WISDOM
HOME FOR CHRISTMAS**

PARISH MINISTRIES



PARISH SCHOOL



RELIGIOUS EDUCATION



PARISH CHOIR

Ss. Faith, Hope & Charity



Ss. Faith, Hope & Charity Parish
191 Linden Street
Winnetka, Illinois 60093
www.faithhope.org